

# V1 QUICK START GUIDE

## OVERVIEW

Thank you for choosing REXING! We hope you love your new product as much as we do.

If you need assistance, or have any suggestions to improve it, please contact us. You can reach us via [care@rexingusa.com](mailto:care@rexingusa.com) or call us at **(203) 800-4466**. Our support team will respond you as soon as possible.

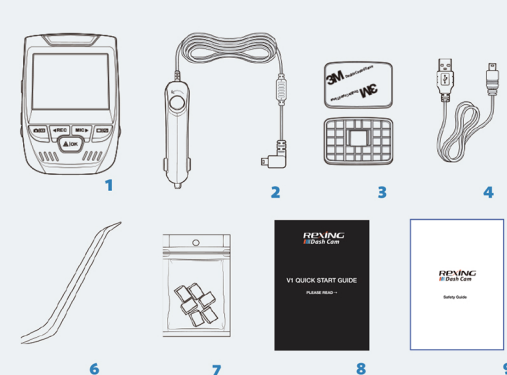
**Always a surprise in Rexing. Check us out here.**

<https://www.facebook.com/rexingusa/>  
<https://www.instagram.com/rexingdashcam/>  
<https://www.rexingusa.com/support/registration/>

Facebook Instagram Website

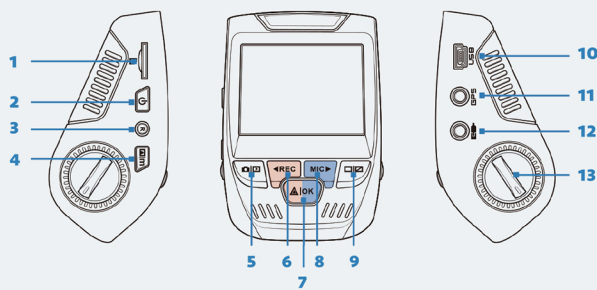


## WHAT'S IN THE BOX?



No.	Name
1	Rexing V1 Dash Cam
2	Car Charger
3	Dash Cam Mount Plate & 3M Adhesive
4	Mini-USB Cable
5	Cable Management Tool
6	Cable Clips
7	V1 Quick Start Guide
8	V1 Safety Guide

## CAMERA OVERVIEW



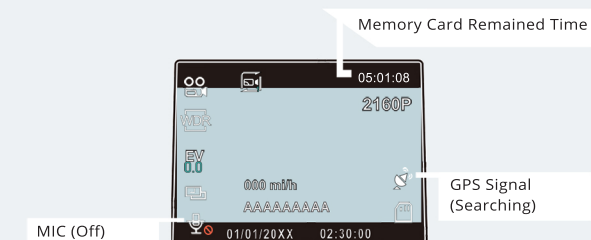
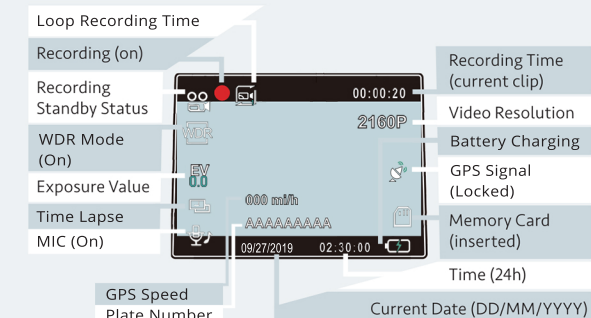
No.	Name
1	Micro SD Card Slot
2	POWER Button
3	RESET Button
4	MENU Button
5	MODE Button
6	REC Button *
7	OK Button **
8	MIC Button ***
9	SCREEN Button
10	Mini-USB Port
11	GPS Logger Port
12	Rear Camera Port (Not Support)
13	Lens Angle Adjustment

\* The camera is recording when the LED is flashing red.

\*\* The camera is recording when the LED is flashing red. The device charging or powered on when the LED is solid blue.

\*\*\*The device is charging or powered on when the LED is solid blue.

## Screen Icons

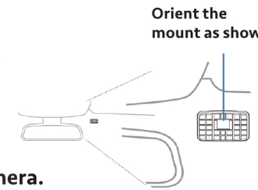


## INSTALLATION

### Step 1: Install the Dash Cam

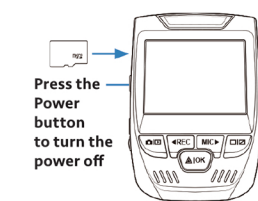
Place the 3M tape on the Mount and properly orient the Mount square to the roof and hood line of the vehicle. **Important!** Ensure the T-interlock on the Mount is oriented in the correct direction.

Firmly press the Mount onto the windshield. **Wait at least 20 minutes before mounting the camera.**



### Step 2: Insert the Memory Card

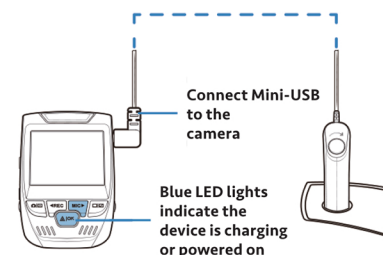
The Rexing V1 accepts [Class 10/ UHS-1 or higher] Micro SD memory cards up to 256GB. You will need to insert a memory card **before you can begin recording. Before inserting or removing a memory card, first ensure you've powered down the device.**



### Step 3: Power the Camera and Format the Memory Card

**Power the camera** by connecting the charger to the car cigarette lighter and camera.

To ensure the V1 records to your memory card properly and without error. **Before you start using a new memory card, you must format the card within the camera using the format function.** Always backup important data stored on the memory card before formatting.



# Enjoy Your Product!

[www.rexingusa.com](http://www.rexingusa.com)



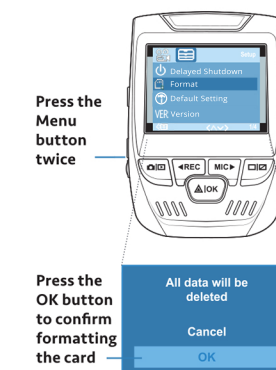
Download the Rexing V1 Manual

<https://www.rexingusa.com/support/product-support/>



To format the memory card, make sure you have inserted your memory card, **then turn on the device by connecting to a power source**. Press REC to stop recording. Then press the MENU button **twice** to enter the System Setup Menu. Use the REC and MIC buttons and go to the Format setting. Press the OK button to confirm the selection.

You may now disconnect from power. The camera will shut down after 3 seconds. The camera should begin recording automatically the next time it is powered on.

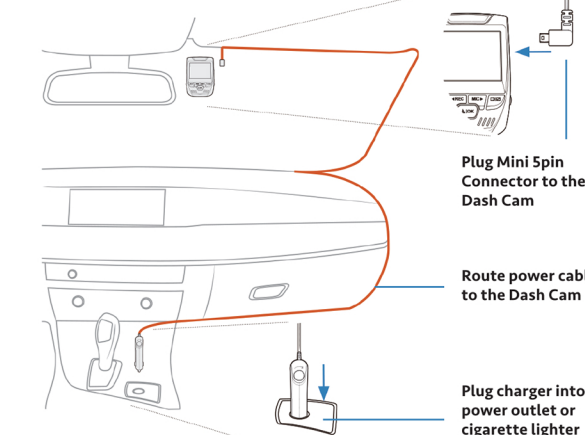


#### Step 4: Installing the Camera onto the Windshield

Place the camera on the mount and carefully route the power cable around the windscreen and tuck it under the trim.

Plug the Car Charger Cable into a 12V DC power outlet or the car cigarette lighter.

Connect car charger to the camera. The camera will auto-start recording once powered on.



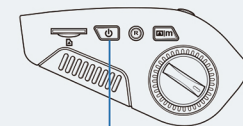
## BASIC OPERATION

### Device Power

The device is automatically powered on when plugged into a 12V accessory socket or cigarette lighter and receives a charge (i.e.: the vehicle is started).

To turn the device on manually, press and hold the POWER button until the welcome screen appears.

The camera will automatically start recording when powered on.

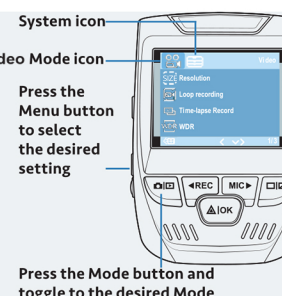


Press and hold the Power button to turn the device on manually

### Menu Settings

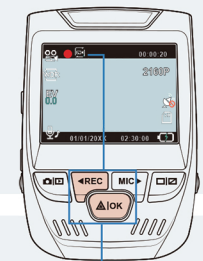
Power the camera On. If the camera is recording, press the Video Mode icon. Press the REC button to stop recording. Press the MODE button and toggle to the desired mode.

Press the MENU button **once** to enter the settings menu for a Mode. Press the MENU button **twice** to enter the System Settings.



### Video Recording

The camera will automatically start recording when the device receives a charge. The LED lights and the red dot will blink when the device is recording. Press the REC button to stop recording.



The camera automatically starts recording when powered on

### Video Playback

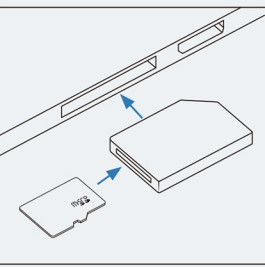
Playback of videos can be done on the device or a computer. Also, if you have purchased a Rexing GPS Logger you may play back the recordings in a specialized application.



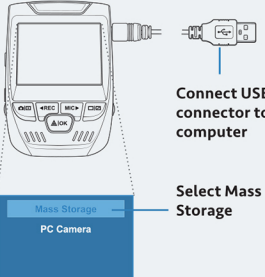
Control playback with these buttons

To playback a video on the computer either use an SD card adapter or connect the device to the computer directly using the USB cable.

To playback a video using an SD card adapter, remove the memory card and insert it into an SD card adapter. Place the adapter in the computer.



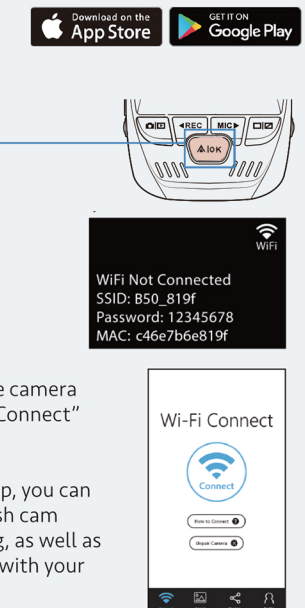
To playback a video using USB cable, connect the USB Cable to the device and the computer. After the device powers up, press the OK Button to select Mass Storage.



### Wi-Fi Connect

Download "Rexing Connect" app from the App Store/ Google Play Store.

- To access or exit the Wi-Fi feature, hold down OK.
- Open Wi-Fi settings on your phone, find "SSID: B50\_XXXX" from the list, tap to connect. (Default password: 12345678)
- Open the Rexing Connect app, tap "Connect" to enter the realtime video streaming page.
- Once connected, the dash cam screen will switch to the camera view and will display "Wi-Fi Connect" message.



Using the Rexing Connect app, you can view a live preview of the dash cam screen, start / stop recording, as well as view and save your captures with your mobile device.

For further instruction regarding the Wi-Fi Connect feature, please visit [www.rexingusa.com/wifi-connect/](http://www.rexingusa.com/wifi-connect/).

### GPS Logger

(Need to purchase separately. ASIN:B07BL4NCMD)

When connected to the camera, it will record the speed and location of your vehicle as you drive.

You can then access this information while playing back your recordings using the GPS Video player (For Windows and Mac, available at [rexingusa.com](http://rexingusa.com)).

Press the MENU button twice and enter the System Settings.

Toggle to the GPS Speed Unit setting and select your preferred speed unit.

After a GPS signal is found, the screen icon will turn from blue to green.

Please visit [gpsa.rexingusa.com](http://gpsa.rexingusa.com) to watch a video tutorial.



### Taking Photos

To take a photo, stop video recording and toggle to the Photo Mode.

Press the OK Button to take a photo.

To view a photo, stop video recording and toggle to the Playback Mode.

Press the REC and MIC Buttons to toggle through your photos.

To delete a photo, stop video recording and toggle to the Playback Mode and toggle through the videos and photos to the one you want to delete.

Press the MENU button once and toggle to the Delete option.

Press the OK Button and select Delete Current or Delete All.

