



Adjustable Wireless Charger w/ Bedside Lamp

User Manual

The information in this manual is subject to change without notice.
www.rexingusa.com

Overview

Thank you for choosing **REXING!**

We hope you love your new products as much as we do. If you need any assistance, or have any suggestions to help us improve, please contact us.



care@rexingusa.com



(877) 740-8004



9 am - 6 pm EST (Monday to Friday)

Our Support Team will respond to you as soon as possible.
Always a surprise in Rexing.

Check us out here.

- <https://www.facebook.com/rexingusa/>
- <https://www.instagram.com/rexingdashcam/>
- <https://www.rexingusa.com/support/registration/>



Facebook



Instagram



Site



Product Support



Package Contents



1



2



3



4



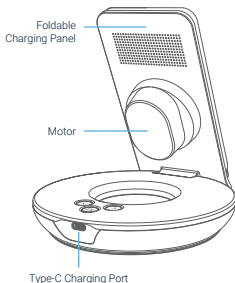
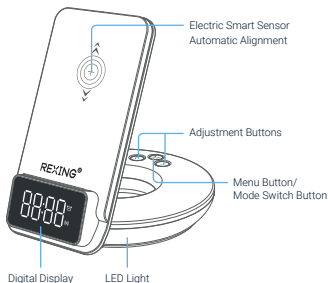
5

1. Adjustable Wireless Charger w/ Bedside Lamp
2. Type-C Cable
3. User Manual
4. Safety Guide
5. Warranty Card

Caution

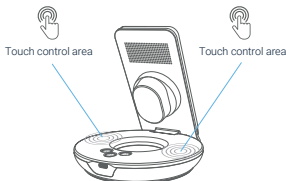
- Do not use this charger under high temperature conditions above 140 degree Fahrenheit (60 degrees Celsius).
- Please use the product in a safe and stable environment.

Product Overview





Brightness Adjustments

The brightness of the digital tube display changes with the brightness of the ambient light; when the ambient light becomes brighter, the display screen becomes brighter, and when the ambient light becomes darker, the display screen also becomes darker.



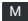




Connect with the power supply. Touch the control area to turn on the light; and touch the area again to turn it off.

Features

1. Auto-recognition & aligning will take place after the device is on; the night light and clock display panel will be on constantly after set up.
2. When a phone is placed on the charger, the panel will automatically scan the phone to find the best location for a fast, wireless charge. The display will show a wireless charging icon.
3. After the panel recognizes the mobile phone, if it finds that it does not support wireless charging, the wireless charging icon will flash quickly for 5 seconds, and then the indicator will go out.
4. If the phone is placed on the panel and the panel fails to recognize the phone automatically, you can click  or  button to reactivate the panel's auto-recognition function (This function is not available in the clock and the alarm setting mode).
5. Fully charge indication: The display's charging icon on the bottom right is on.

Time Setting

(hour/minute adjustment)

1. Press the  button to enter the time setting mode, and the tens digit of the hours will start to flash.
2. Use the  and  buttons to adjust the time.
3. If no button is in operation for more than 10 seconds when any number is flashing, the setting edit will be canceled, and the current setting data will be invalid. If you re-press any button, the Time Setting will restart.
4. When the hour adjustment is complete, press the  button again to enter the setting of the next digit; when the hours and minutes have been set, press the  button again to confirm. You'll hear a long beep when the time setting is successful.

Alarm Setting

(hour/minute adjustment)

Non-repeat Alarm:

1. Hold the **M** button to enter the Non-repeat alarm setting mode, the tens digit of the hour and the alarm icon will start to flash.
2. Use the **>** and **<** buttons to adjust the time.
3. If no button is in operation for more than 10 seconds when any number is flashing, the setting edit will be canceled, and the current setting data will be invalid. If you re-press any button, the Time Setting will restart.
4. When the hour adjustment is complete, press the **M** button again to enter the setting of the next digit; when the hours and minutes have been set, press the **M** button again to confirm which will follow by a long beep sound. When the alarm clock symbol lights up, it means that the single alarm setting is successful.
5. When the time of the non-repeat alarm is triggered, the alarm icon is always on. The buzzer will also intermittently beep, light up, and flash simultaneously. After 1 minute, the buzzer will stop automatically, and the light and the alarm clock icon will go out. If any button is pressed during the alarm period, it will end immediately.

Repeat Alarm

1. Hold the **<** button to enter the repeat alarm setting mode, the tens of the hour starts to flash, and the alarm symbol flashes.
2. Use the **>** and **<** buttons to adjust the time.
3. If no button is in operation for more than 10 seconds when any number is flashing, the setting edit will be canceled, and the current setting data will be invalid. If you re-press any button, the Time Setting will restart.

4. When the hour adjustment is complete, press the **M** button again to enter the setting of the next digit; when the hours and minutes have been set, press the **M** button again to confirm. A long beep indicates that the repeat alarm clock is successfully set.
5. When the time of the repeat alarm is triggered, the alarm icon is always on. The buzzer will also intermittently beep, light up, and flash simultaneously. After 1 minute, the buzzer will stop automatically, and the light will go out. If any button is pressed during the alarm period, it will end immediately.
6. When the alarm is over, the charger will retain the data for the repeat alarm in the memory, which means the alarm will still be there, and when the next alarm time comes, the alarm will ring again

Clear Alarm

Hold the **>** button, a long beep indicate that the alarm data has been cleared from the memory (including non-repeat alarm and repeat alarm).

Clock Memory

After the clock is set, the original setting of the clock will not change even if the power is off.

Snooze

When the alarm sounds, touch control area once to enter the snooze mode; it will ring again after 10 minutes, and repeat this cycle; If there is no action within 1 minute of continuous ringing, the alarm will stop.

Specifications

Name	Adjustable Wireless Charger w/ Bedside Lamp
Input	5V-2A 9V-2A
Output Power	15W (compatible with 10W, 7.5W, 5W)
Working Distance	3-6mm
Compatibility	All Qi enabled mobile phones

Warranty & Support

Warranty

The Rexing Adjustable Wireless Charger w/ Bedside Lamp comes with a full 12-month warranty. If you register your product on our official site <https://www.rexingusa.com/support/registration>, you can extend the warranty to 18 months.

Support

If you have any questions regarding your product, please do not hesitate to contact us at care@rexingusa.com, or call us at (877) 740-8004. Queries are typically answered within 12-24 hours.

Your opinion matters

Rexing is firmly committed to always improving our products, services, and user experience. If you have any thoughts on how we can do even better, we welcome your constructive feedback and suggestions.

Connect with us today at care@rexingusa.com

Thank you for choosing Rexing!

FCC ID: 2AXTH-M5

This device complies with part 15 of the FCC Rules. Operation is subject to the following two conditions: (1) This device may not cause harmful interference, and (2) this device must accept any interference received, including interference that may cause undesired operation.

Changes or modifications not expressly approved by the party responsible for compliance could void the user's authority to operate this equipment.

REXING®



MADE IN CHINA