



REXING®

Walmart Exclusive

V1 FHD

Quick Start Guide

The information in this manual is subject to change without notice.

Activate Your **18-MONTH** WARRANTY

& Choose Your
FREE Gift!

Activate **within 30 days** of purchase to claim your free gift and extend your limited 12-month warranty to **18 months**.

Scan The QR To Activate & Select Your Free Gift

SCAN ME



<https://www.rexingusa.com/productreg/>

Walmart Exclusive

1. Overview

Thank you for choosing REXING! We hope you love your new product as much as we do.

If you need assistance, or have any suggestions to improve it, please contact us. You can reach us via care@rexingusa.com or call us at **(203)800-4466**. Our support team will respond you as soon as possible.

Always a surprise in Rexing. Check us out here.

<https://www.facebook.com/rexingusa/>
<https://www.instagram.com/rexingdashcam/>
<https://www.rexingusa.com/support/registration/>

 Facebook



 Instagram



 Site



 TikTok



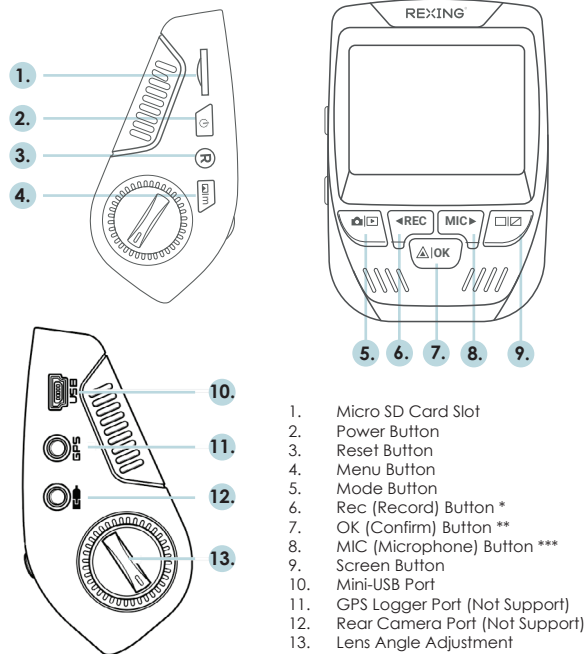
2. What's in the Box



1. Rexing V1 FHD Dash Cam
2. Car Charger
3. Dash Cam Mount Plate & 3M Adhesive
4. 32GB SD Card
5. Cable Management Tool
6. Cable Clips
7. Warning Sticker

8. V1 FHD Quick Start Guide
9. Safety Guide
10. Electrostatic Sticker
11. Section Cup Mount

3. Camera Overview



1. Micro SD Card Slot
2. Power Button
3. Reset Button
4. Menu Button
5. Mode Button
6. Rec (Record) Button *
7. OK (Confirm) Button **
8. MIC (Microphone) Button ***
9. Screen Button
10. Mini-USB Port
11. GPS Logger Port (Not Support)
12. Rear Camera Port (Not Support)
13. Lens Angle Adjustment

*The Camera is recording when the LED is flashing red.

** The Camera is recording when the LED is flashing red. The device charging or powered on when the LED is solid blue.

*** The device is charging or powered on when the LED is solid blue.

4. Installation

Step 1: Installing the Electrostatic Stickers

1.1 Prepare Your Windshield

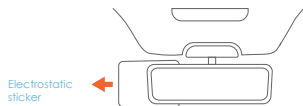
Thoroughly cleanse your windshield with either water or alcohol. Follow this by wiping it dry using a clean, dry cloth to ensure a spotless surface.

1.2 Position the Sticker

Next, carefully peel off the protective film from the electrostatic sticker.

Attach the sticker to the windshield, ideally behind the rear-view mirror.

This position is recommended to avoid obstructing your view while you're on the road.



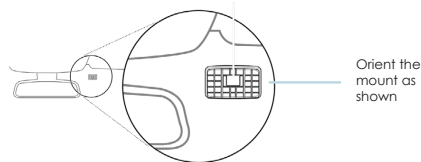
Step 2: Install the Dash Cam

Place the 3M adhesive on the mount plate and properly orient the mount piece to the roof and hood line of the vehicle.

Secure the Mount and Camera

Now, remove the 3M tape from the mount. Once done, you can proceed to fix both the mount and camera onto the previously positioned electrostatic stickers.

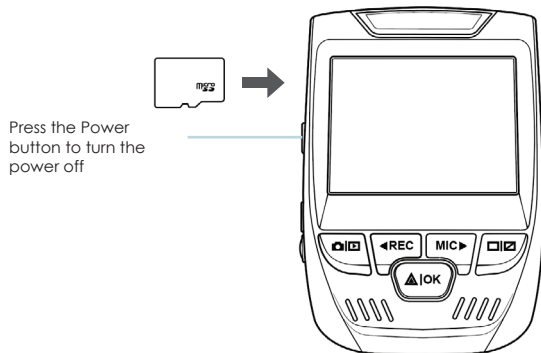
Important!! Ensure the T-interlock on the mount is oriented in the correct direction. Firmly press the mount onto the windshield. **Wait at least 20 minutes before mounting the camera.**



Step 3: Insert the Memory Card

The Rexing V1 FHD accepts [Class 10/UHS-3 or higher] Micro SD memory cards up to 256GB. You will need to insert a memory card **before you can begin recording. Before inserting or removing a memory card, first ensure you've powered down the device.**

Gently push the memory card in until you hear a click, and allow the spring release to push the card out.



Step 4: Power on the Camera and Format the Memory Card

Power on the camera by connecting the charger to the car cigarette lighter and camera.

To ensure the V1 FHD records to your memory card properly and without error. **Before you start using a new memory card, you must format the card within the camera using the format function.** Always backup important data stored on the memory card before formatting.

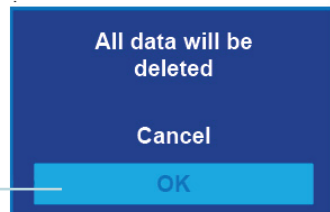
To format the memory card, make sure you have inserted your memory card, **then turn on the device by connecting to a power source**. Press **REC** to stop recording. Then press the **MENU** button **twice** to enter the System Setup Menu. Use the **REC** and **MIC** buttons and go to the Format setting. Press the **OK** button to confirm the selection.

You may now disconnect from power. The camera will shut down after 3 seconds. The camera should begin recording automatically the next time it is powered on.

Press the Menu button twice



Press the OK button to confirm formatting the card

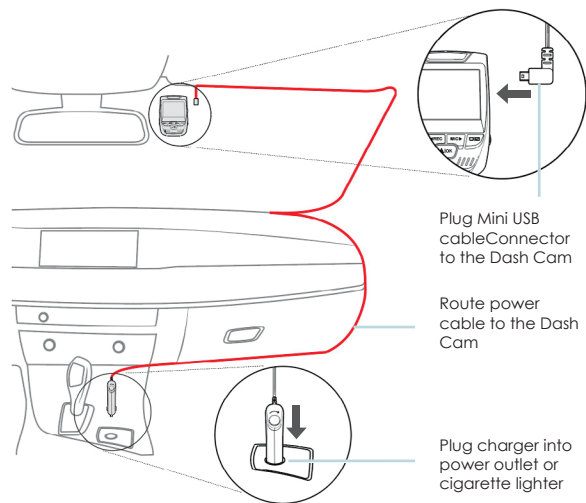


Step 5: Installing the Camera onto the Windshield

Place the camera on the mount and carefully route the power cable around the windscreen and tuck in under the trim.

Plug the Car Charger Cable into a 12V DC power outlet or the car cigarette lighter.

Connect car charger to the camera. The camera will auto-start recording once powered on.



5. Basic Operation

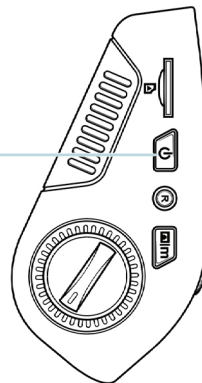
Device Power

The device is automatically powered on when plugged into a 12V accessory socket or cigarette lighter and received a charge (i.e. the vehicle is started).

To turn the device on manually, press and hold the **POWER** button until the welcome screen appears.

The camera will automatically start recording when power on.

Press an hold the POWER button to turn the device on manually



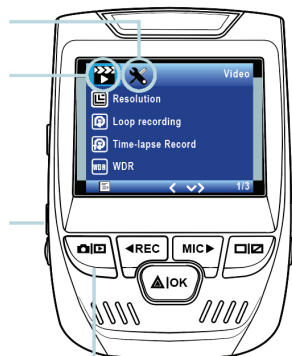
Power Setting

Power the camera on. If the camera is recording, press the **REC** button to stop recording. Press the **MODE** button and toggle to the desired mode.

Press the **MENU** button once to enter the settings menu for a Mode. Press the **MENU** button twice to enter the System Settings.

System icon
Video Mode icon

Press the Menu button to select the desired setting



Press the Mode button and toggle to the desired Mode



The camera automatically start recording when powered on

Video Recording

The camera will automatically start recording when the device receives a charge. The LED lights and red dot will blink device when the device is recording. Press the **REC** button to stop recording.

Video Playback

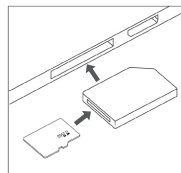
Playback of videos can be done on the device or a computer. Also, if you have purchased a Rexing GPS Logger you may play back the recordings in a specialized application.

To playback a video on the device, toggle to the Playback mode. Use the **REC** and **MIC** buttons to toggle to the desired video. Press the **OK** button to play.

During playback use the **OK** (pause), **MIC** (fast forward) and **REC** (rewind) buttons to control the video playback.

During playback use the **OK** (pause), **MIC** (fast forward) and **REC** (rewind) buttons to control the video playback.

To playback a video on the computer, either use an SD card adapter or connect the device to the computer directly using the USB to Mini USB cable.

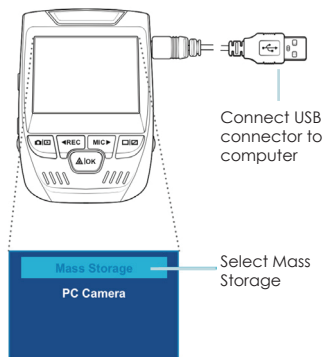


To playback a video using an SD card adapter, remove the memory card and insert it into an SD card adapter. Place the adapter in the computer.

Playback mode



Control playback with these buttons



To playback a video using USB to Mini USB cable, connect the USB to Mini USB cable to the device and the USB connector to the computer.

After the device powers up, press the OK Button to select Mass Storage.
On the computer, navigate to device drive. The videos are stored at:
\\CARDV\MOIVE.

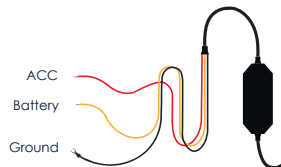
Select the video to playback.

Parking Monitor (Parking Surveillance Mode)

Parking monitor provides surveillance on your parked vehicle. When the engine is off, the hardwire kit is used to provide continuous power and protect your car battery from being discharged.

Option 1: Vibration Detection

To activate the Parking Mode, you need to connect it with a Smart hardwire kit (sold separately).



This feature will allow the dash cam to switch to parking mode automatically if the vehicle's engine turns off and switch back to the normal recording after the vehicle's engine turns on.

Gravity Sensing Record:

The Gravity Sensing detects significant or sudden movement (such as an impact or collision), it will trigger an event recording. We suggest setting the "Gravity Sensing" to High sensitivity for Parking Mode Recording.

Note:

If you do not use the parking mode function, please change the Gravity Sensing sensitivity to low. Otherwise, the video will easily be locked and the video cannot be deleted by the loop recording function. This will cause the memory card to be full of locked videos and cause the recorder to fail to work normally.

Please **DO NOT ENABLE** the Parking Monitor function in the settings of the dash cam **WITHOUT** connecting a smart hardwire kit. They may cause a malfunction.

Option 2: Motion Detection

To use this feature, you need to connect it with a Rexing Intelligent Hardwire Kit (sold separately). Make sure that the Parking Mode is turned off on your dash cam.

Make sure that the Parking Mode is **turned off** on your dash cam, otherwise it may cause a malfunction.

Once the sensor has detected **MOTIONS**. The intelligent hardwire kit will power up the dash cam automatically and start recording until the **MOTION** is cleared.

GPS Logger

(Need to purchase separately)
rexingusa.com/product/gps-logger/

When connected to the camera, it will record the speed and location of your vehicle as you drive.

You can then access this information while playing back your recordings using the GPS Video player (For Windows and Mac, available at rexingusa.com)

Press the MENU button twice and enter the System Settings.

Toggle to the GPS Speed Unit setting and select your preferred speed unit.

After a GPS signal is found, the screen icon will turn from blue to green.

Please visit gpsa.rexingusa.com to watch a video tutorial.

GPS Date-Time Troubleshooting

If your dash cam GPS date and time are incorrect please go to
<https://www.rexingusa.com/gps-date-time/> OR scan the QR code below.



GPS Signal
(Not connected)



GPS Signal
(Searching)



GPS Signal
(Active)



Taking Photos

To take a photo, stop video recording and hold the button.

Press the **OK** Button to take a photo

To view a photo, stop video recording and toggle to the Playback Mode.

Press the **REC** and **MIC** Buttons to toggle through your photos.

To delete a photo, stop video recording and toggle to the Playback Mode and toggle through the videos and photos to the one you want to delete.

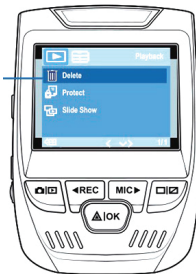
Press the **MENU** button once and toggle to the Delete option.

Press the **OK** Button and select Delete Current or Delete All.

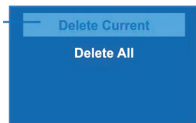
Toggle to the Playback mode and select a photo to view



Toggle to the Delete option



Choose the desired option



This device complies with part 15 of the FCC Rules. Operation is subject to the following two conditions: (1) This device may not cause harmful interference, and (2) this device must accept any interference received, including interference that may cause undesired operation. Changes or modifications not expressly approved by the party responsible for compliance could void the user's authority to operate this equipment.

Changes or modifications not expressly approved by the party responsible for compliance could void the user's authority to operate this equipment.

REXING®



MADE IN CHINA