

# REXING®

## C3

# User Manual

The information in this manual is subject to change without notice.

[www.rexing.com](http://www.rexing.com)

REV11262025

# Activate Your 18-Month Warranty & Choose Your FREE Gift!

Activate within 30 days of purchase to claim your free gift and extend your limited 12-month warranty to 18 months.

Scan The QR To Activate &  
Select Your Free Gift

**SCAN  
ME!**



<https://www.rexingusa.com/productreg/>

## Overview

### Thank you for choosing **REXING!**

We hope you love your new products as much as we do. If you need assistance, or have any suggestions to improve it, please contact us.

✉ [care@rexingusa.com](mailto:care@rexingusa.com)

☎ (877) 740-8004

Our support team will respond to you as soon as possible.  
Always a surprise with Rexing

Check us out here.

- <https://www.facebook.com/rexingusa/>
- <https://www.instagram.com/rexingdashcam/>
- <https://www.rexingusa.com/support/registration/>

 Facebook



 Instagram



 Site

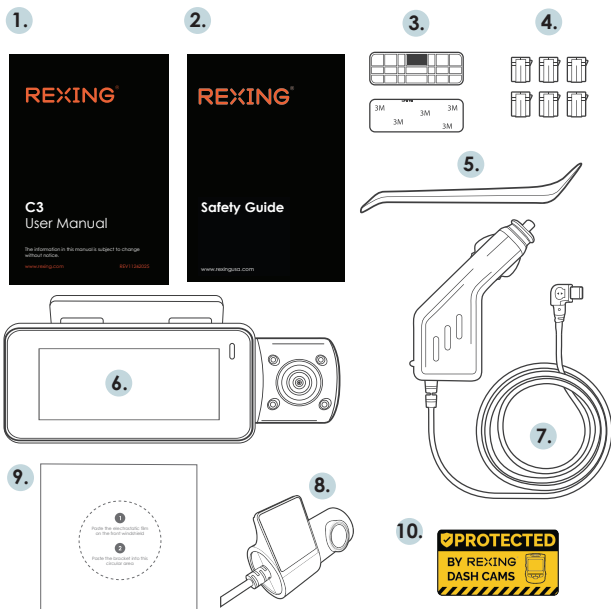


 Product Support





# 1. What's in the box



1. Users Manual
2. Safety Guide
3. 3M Adhesive Mount
4. Cable Adhesive Spacer
5. Cable Management Tool
6. Rexing C3 Dash Camera
7. Car Power Connector (12ft)
8. C3 Rear Camera with Extension
9. Electrostatic Sticker
10. Warning Sticker

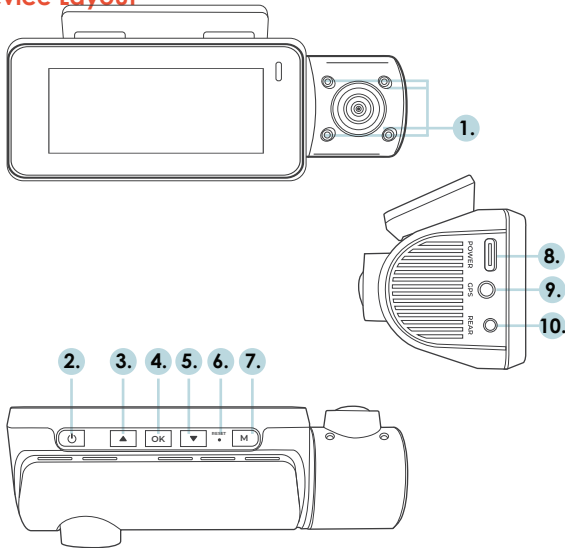
The items supplied with the device and any available accessories may vary depending on your region. Appearances and specifications are subject to change without prior notice. Availability of accessories is subject to change.

All supplied items are designed for use only with this device and may not be compatible with other devices. Malfunctions resulting from the use of unapproved accessories are not covered by the warranty service.

For more information about available accessories, refer to [www.rexing.com](http://www.rexing.com).

## 2. Camera Overview

### Device Layout

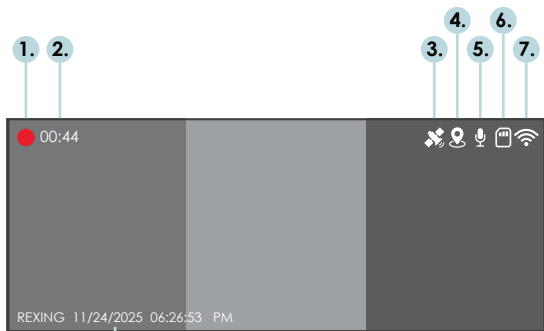


1. 4 IR Lights
2. Power Button(Hold)/ Screen on/off
3. Up Button/ Mic Button / GPS info(Hold)
4. OK Button/ Record Button/ Take Photo(Hold)
5. Down Button/ Screen Toggle Button/ Wi-Fi on/off(Hold)
6. Reset Pinhole
7. Menu Button/ Lock Current Video(Hold)
8. Power/ USB Charging Port
9. GPS Logger Port
10. Rear Camera Port

### Buttons

Button	Function
	<b>Press:</b> Display on or off <b>Hold:</b> Turn the device on or off manually
<b>OK</b>	<b>Menus:</b> Confirm a selection <b>Video Mode:</b> Start/ Stop recording; Hold to take a photo <b>Playback Mode:</b> Start/ Stop playback
<b>M</b>	<b>Press:</b> Enter menu, toggle through menus or exit current menu <b>Hold:</b> Exit current menu
	<b>Menus:</b> Move selection up <b>Hold:</b> Display GPS info <b>Playback Mode:</b> Previous video. <b>Press:</b> Mic on/off
	<b>Menus:</b> Move selection down <b>Hold:</b> Wi-Fi on/off <b>Video Mode:</b> Toggle between front/cabin/rear view. <b>Playback Mode:</b> Next video.
<b>RESET</b>	Press and hold for 4 seconds to reset the device in the event that it operates erratically, hangs up, or freezes
<b>LED Indicator</b>	Flashing Blue: Recording Solid red: Power on

## Status Icons



1. Recording (Blinking)
2. Recording time (current clip)
3. GPS status
4. Location indicator
5. Mic status
6. Memory card status
7. Wi-Fi Status(Green: Connected)
8. Current date and time

## 3. Get Started

### Installation

Video guide can be found at  
<https://www.rexing.com/>

### Step 1: Installing the Electrostatic Stickers

#### 1.1 Prepare Your Windshield

Thoroughly cleanse your windshield with either water or alcohol. Follow this by wiping it dry using a clean, dry cloth to ensure a spotless surface.

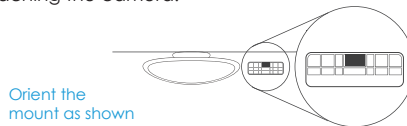
#### 1.2 Position the Sticker

Next, carefully peel off the protective film from the electrostatic sticker. Attach the sticker to the windshield, ideally behind the rear-view mirror. This position is recommended to avoid obstructing your view while you're on the road.



### Step 2: Mount the Dash Camera

Make sure that you mount the front camera in a safe, appropriate location where it won't obstruct the driver's view. Clean your windshield before applying the mount. Wait **at least 20 minutes** after applying the mount to the windshield before attaching the camera.

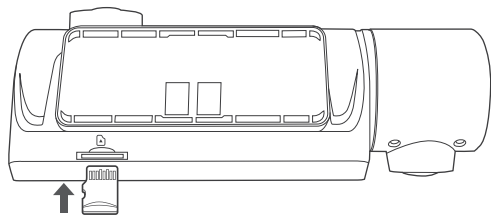


### Step 3: Inserting the Memory Card

The C3 accepts Micro SD Memory cards (class 10 or higher with a maximum capacity of 256GB).

Depending on the memory card manufacturer and type, some cards may not be compatible with your device. **Using an incompatible card may damage the device or the memory card or corrupt the data stored on it.**

Note: Before inserting or removing a memory card, first ensure you've powered down the device.



#### Inserting a memory card

1. If the device is powered on, press and hold the **POWER** button to power down.
2. Insert the card in the orientation shown.
3. Push the card into the slot, listening for a click sound signaling the card is securely inserted.

#### Removing the Memory Card

Before removing a memory card from your C3, you must first dismount it for safe removal.

**With the device powered down**, press down the memory card until you hear a click. Gently remove your finger (or other pressing object to allow the spring release to push the memory card out of the slot).

**Do not remove the memory card while the device is transferring or accessing information.** Doing so can result in data loss or corruption or damage to the memory card or device. Rexing is not responsible for losses that result from the use of damaged memory cards, including the loss of data.

**Connecting the charger improperly may cause serious damage to the device. Any damage caused by misuse is not covered by the warrant. Use only Rexing-approved chargers. Using unapproved chargers or cables can damage the device.**

**If the device receives an unstable power supply, the screen may not function properly. If the device is not operating properly using a Rexing-approved charger, please contact Customer Care ([care@rexingusa.com](mailto:care@rexingusa.com)).**

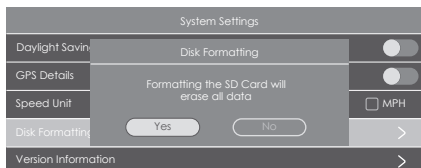
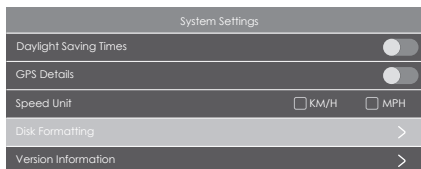
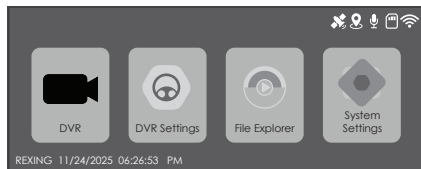
### Step 4: Format the Memory Card

Run the cable down from your camera to the 12V cigarette lighter port of your vehicle. Be sure to connect only Rexing-approved chargers designed and supplied specifically for use with your device. Using an incompatible charger can cause serious personal injury or damage to you device.

**Before formatting your memory card, always remember to make backup copies of all important data stored on the device. The manufacturer's warranty does not cover loss of data resulting from user actions.**

**For best results, format the memory card using the Format function on your camera.**

It's recommended that you format your memory card after transferring files to your computer or at least once a month.

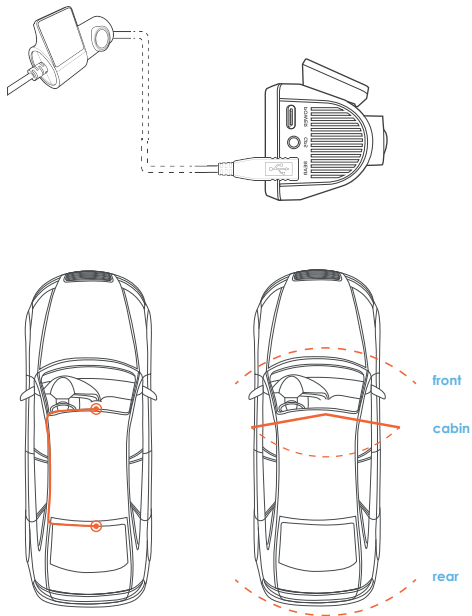


### Using your camera to format a memory card:

1. Press the **Menu** button to enter the Setup Menu.
2. Use the **UP** and **Down** navigation button to navigate to the "System Settings" option.
3. Press **OK** to confirm your selection.
4. Use the Up and Down select the "Format" option.
5. You will be notified that all data will be deleted. Select "OK" to confirm format.
6. After the formatting is completed, disconnect from the power source. The camera will shut down automatically after 3 seconds. The next time the camera is connected to power, the camera should start up and begin recording automatically.

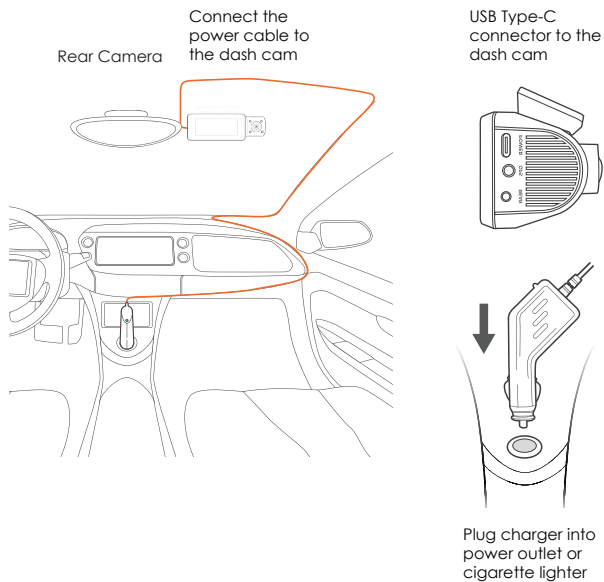
## Step 5: Mount the Rear Camera

Mount the rear camera as shown below. Use rear camera cable to connect the rear camera to the C3 camera.



## Step 6: Installing the Camera onto the Windshield

Place the camera on the mount and carefully route the power cable around the windshield and tuck in under the trim. Plug the Car Charger Cable into a 12V DC power outlet or the car cigarette lighter. Connect car charger to the camera. The camera will auto-start recording once powered on.



## Step 7: Turning the Device On or Off

Press and hold the **POWER** button for a few seconds to turn on the device. A welcome message will be displayed on the screen. Doing the same to manually turn off the device and a goodbye message will be displayed.

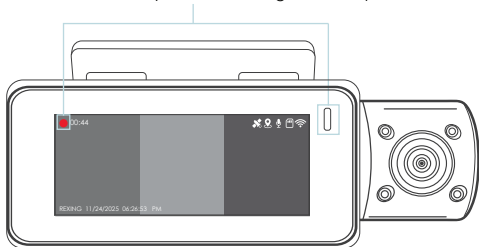
**The C3 will switch on or off automatically if you keep it connected using the car charger. The camera will automatically start recording when it is powered on. After power is disconnected, the device will shut down after 3 seconds.**

*Note: If your car cigarette lighter provides constant power, the unit may not turn on or off automatically with the car.*

## 4. Basic Operation

### 4.1 Automatic Recording

The camera automatically starts recording when it is powered on



The device will automatically turn on and begin recording once it receives power, such as when you start your car. The indicator and the red dot icon on screen will flash while recording.

### Display Control

To switch between camera views on the LCD display, press the Down button. Press the POWER button will turn on or off the LCD screen, your display setting won't affect the way recordings are captured.

### Locking Videos

While recording, you can hold the **Menu** button to manually lock the current video clip. This will ensure that Loop Recording won't overwrite the clip when the memory card is full. You can also lock videos after recording by using the Protect function in the Playback Menu. Locked videos can be found on the memory card under "video\_front\_lock", "video\_interior\_lock" and "video\_back\_lock".

### Automatic Shutdown

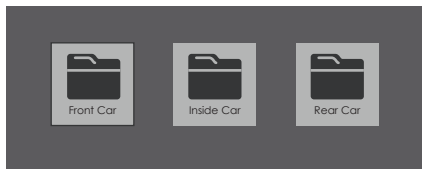
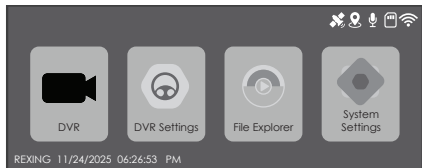
Once power is disconnected, the dash cam will shut down within 3 seconds.

### Wi-Fi Feature

Hold the Down button to enable Wi-Fi feature. For detailed instructions on how to use Wi-Fi feature, see page 25 (Wi-Fi Connect).

## 4.2 Playback

Video recordings from the front and back cameras will be stored in chronological order on the memory card for easy navigation and playback.



ITEM	VIDEO	VIDEO_LOCK	IMAGE
Front Car		2025-11-25_07_10_21_f.ts	
		2025-11-25_07_09_21_f.ts	
		2025-11-25_07_08_21_f.ts	
		2025-11-25_07_06_21_f.ts	
		2025-11-25_07_03_21_f.ts	
		2025-11-25_07_02_21_f.ts	

### 4.2.1 Camera Playback Mode

#### To play recordings on your device:

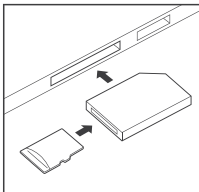
1. Press the MENU button to enter main menu.
2. Select "File Explorer"
3. Select the desired folder.
4. Use the UP and DOWN buttons to browse your videos.
5. Press OK to play a selected recording.
6. During playback, press OK to stop playback.

## 4.2.2 Computer Playback

Recommended Media Players: QuickTime Media Player / VLC / Windows Media Player

Insert your Micro SD card into an SD card adapter, then insert the SD card adapter into your computer or a card reader to access your card storage. Your videos will be stored under "video\_front", "video\_interior" and "video\_back".

Locked videos can be found on the memory card under "video\_front\_lock", "video\_interior\_lock" and "video\_back\_lock".



## 4.2.3 GPS Playback

You can play back your recordings in a specialized application that allows you to view speed and location information alongside your footage.

### System Requirements

Operating System: Windows 7, 8, or 10, MAC OS X  
Display Resolution: 1280 x 720

### Installing the application:

1. You can then access this information while playing back your recordings using the GPS Video player (**For Windows and Mac, available at [rexingusa.com](http://rexingusa.com)**).
2. Download the zip folder containing the software installer.
3. Unzip the folder to access the installer file contained within.
4. Open the installer and follow the instructions to install the GPS Playback software to your computer.
5. Once installed, you may launch the application.

Please go to [www.rexing.com](http://www.rexing.com) for a tutorial video.

### Opening a GPS video file:

1. Once you've opened the application, navigate to the top menu bar and click "File > Open" to browse through your files.
2. Navigate to the video file you want to add to the playback queue, select it and click "Open" to load it into the application. You may also select multiple videos at once.
3. After a brief loading period, the (first) video should begin playing automatically, displaying speed and location information in real time along the right-side panels.

### Playback

Beneath the video is a playback bar with a handle that you can drag to skip ahead to any time point in the video. Beneath that, there's a volume control slider, as well as previous, rewind, pause/play, fast forward, next, and stop buttons.

## Additional Controls

**Snip:** Save the current frame of video as an image (PNG).

**Full Screen:** View the video in full screen (double-click the video to exit).

## Settings

In the settings menu, you may change your language from English to Chinese, Japanese, or Vietnamese, etc. You may also change your unit of speed measurement from MPH to KM/H.

The dash cam will automatically search for the GPS signal once it's connected to the power source. Press the MENU button twice and go to System Settings. Toggle the GPS Speed Unit setting, and select your favorite speed unit.

After a GPS signal is found, the screen icon will turn from red to green. It will record the speed and location of your vehicle as you drive.

## GPS Date-Time Troubleshooting

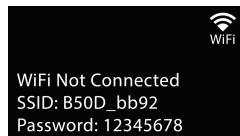
If your dash cam GPS date and time are incorrect please go to <https://www.rexingusa.com/gps-date-time/> OR scan the QR code below.



## 4.3 Wi-Fi Connect

### Step 1

With your dash cam powered on, hold the **DOWN** navigation button to enable the Wi-Fi function. The Wi-Fi name (aka the SSID) and password for the dash cam should be displayed on-screen.

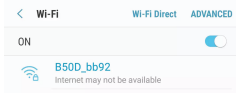


### Step 2

On your mobile device, navigate to your Wi-Fi settings. Connect to your dash cam's Wi-Fi by tapping its name when it appears. Enter your dash cam's Wi-Fi password if you are prompted to do so.

**Note:** On some mobile devices, you may have to try to connect more than once. To ensure you've successfully connected, your mobile device's screen should resemble the examples shown.

#### Samsung / Android Example



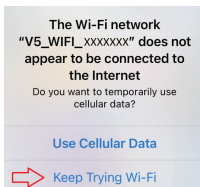
#### iPhone / iOS Example



### Step 3

Once you're connected to the dash cam, open the Rexing Connect app on your mobile device.

Please select "Keep Trying Wi-Fi" if you see the notification on the right.



### Step 4

In the app, hit the "Connect" button to connect to your dash cam, allowing you to access live view and view/download your recordings.

**Note:** Hold to the **DOWN** button for 2 seconds to disconnect the Wi-Fi.

#### 4.3.1 Rexing Connect App

Easily download the app by scanning the QR code below or search via the App Store or Google Play.



#### 4.3.2 Wi-Fi Connect Troubleshooting

If you bring up the Rexing connect app and cannot connect your phone to the dash cam please go to

<https://www.rexingusa.com/wifi-connect/>

OR scan the QR code below.

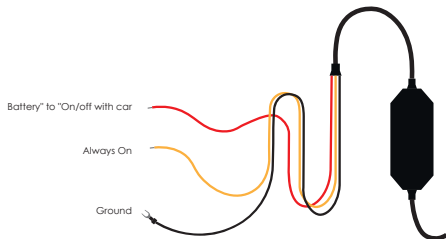


## 4.4 Parking Monitor (Parking Surveillance Mode)

Parking monitor provides surveillance on your parked vehicle. When the engine is off, the hardwire kit is used to provide continuous power and protect your car battery from being discharged.

### Option 1: Vibration Detection

To enable the Parking Monitor, you'll need to connect it with a Smart Hardwire Kit (sold separately).



This feature will allow the dash cam to switch to parking mode automatically if the vehicle's engine turns off and switch back to the normal recording after the vehicle's engine turns on.

### Gravity Sensing Record:

The Gravity Sensing detects significant or sudden movement (such as an impact or collision), it will trigger an event recording.

### Note:

Please **DO NOT ENABLE** the Parking Monitor function in the settings of the dash cam **WITHOUT** connecting a smart hardwire kit. They may cause a malfunction.

### Option 2: Motion Detection

To use this feature, you need to connect it with a Rexing Intelligent Hardwire Kit (sold separately).

**Make sure that the Parking Mode is turned off on your dash cam, otherwise it may cause a malfunction.**

Once the sensor has detected MOTIONS. The intelligent hardwire kit will power up the dash cam automatically and start recording until the MOTION is cleared.

Please go to

<https://www.rexingusa.com/hwk-install/> to watch a video tutorial about the installation or scan the QR code below.



## 5. Warranty & Support

### Warranty

The Rexing C3 Dash Cam comes with a full 12-month warranty. If you register your product on our official site <https://www.rexingusa.com/support/registration>, you can extend the warranty to 18 months.

### Support

If you have any questions regarding your product, please do not hesitate to contact us at [care@rexingusa.com](mailto:care@rexingusa.com), or call us at (877)740-8004. Queries are typically answered within 12-24 hours.

### Your opinion matters

Rexing is firmly committed to always improving our products, services, and user experience. If you have any thoughts on how we can do even better, we welcome your constructive feedback and suggestions.

Connect with us today at [care@rexingusa.com](mailto:care@rexingusa.com)

Thank you for choosing Rexing!

## FCC ID: 2AW5W-V33

This device complies with part 15 of the FCC Rules. Operation is subject to the following two conditions: (1) This device may not cause harmful interference, and (2) this device must accept any interference received, including interference that may cause undesired operation.

Changes or modifications not expressly approved by the party responsible for compliance could void the user's authority to operate this equipment.

# REXING®



MADE IN CHINA